



PCSD

Facilities Projects

The Pulaski Community School District is growing. The Board of Education and district administrators have gathered information from architects and demographers while looking ahead to meet future needs. They are presenting that information to the community prior to collecting community feedback from a survey to be conducted this spring.

A peek inside

Consultants hired by the district have made recommendations regarding how to meet facility and programming needs well into the future. Here are photos with some context that show where the PCSD is in 2022. Included are photos from Hillcrest and Sunnyside Elementary Schools as well as the Pulaski High School Technology Education Wing and the PCMS pool. While all seven schools have needs, this slide show is focusing on these particular areas. More information can be found at: www.pulaskischools.org/business/facilities-projects.

Hillcrest Elementary

OVERVIEW: Hillcrest Elementary is already overcrowded as the surrounding area has been and will continue to be developed and more families move into the area. September 2021 4K-5 enrollment at Hillcrest Elementary was 387 students, which is well above its capacity range of 303 to 332 students.



Hillcrest Elementary

The gymnasium is used for music instruction.
The former music room is used as a grade school classroom.



Hillcrest Elementary

The music teacher uses a former locker room as her office along with storage for various departments.



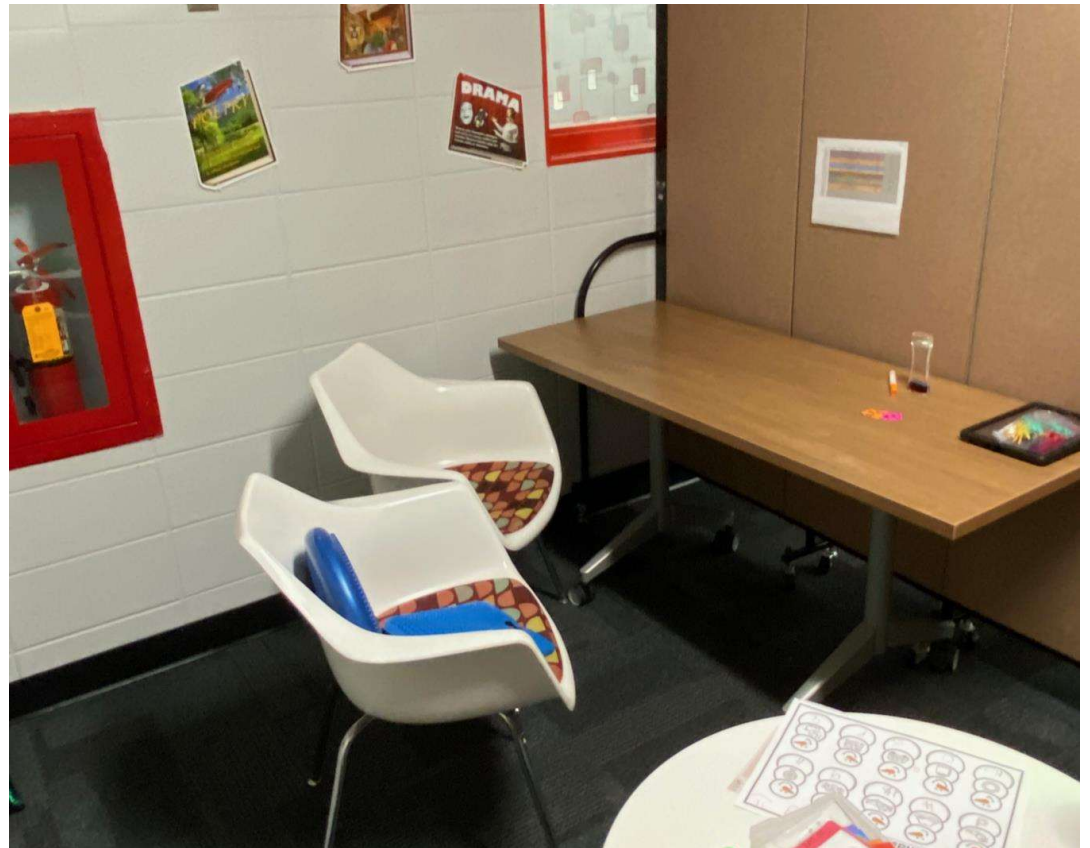
Hillcrest Elementary

This Hillcrest staff member has an office in the electrical room.



Hillcrest Elementary

Room dividers are used in one corner of the library so staff members can have a separate space to work with students.



Hillcrest Elementary

A classroom area is in what was a remodeled storage area.



Hillcrest Elementary

A small space formerly used for storage is used for instructional purposes.



Hillcrest Elementary

The staff break room has been converted to include a business center as well.



Hillcrest Elementary

Another former storage room used as a special education area.



Hillcrest Elementary

School pick-up often leads to cars lining up on Brown County FF snarling traffic across from the school.



Hillcrest Elementary

Cars entering and leaving the Hillcrest parking lot at the end of the day cause congestion. Oftentimes, cars are lined up on Brown County FF tying up traffic for those who are not in the area to pick up students.



Hillcrest Elementary

Cars entering and leaving the Hillcrest parking lot at the end of the day cause congestion. Oftentimes, cars are lined up on Brown County FF tying up traffic for those who are not in the area to pick up students.



Sunnyside Elementary

Sunnyside Elementary School was built in 1980. The school has not had any major additions, renovations, or remodels. Sunnyside's September 2021 grade 4K-5 enrollment was 476 students, which is between its capacity range of 452 to 484 students. In other words, the school is operating above its lower limit capacity.



Sunnyside Elementary

Under a proposed plan for Sunnyside Elementary, student coat racks will be moved from halls into cubby areas to give more room in the halls.



Sunnyside Elementary

The current lunchroom added tables to handle increased student population.



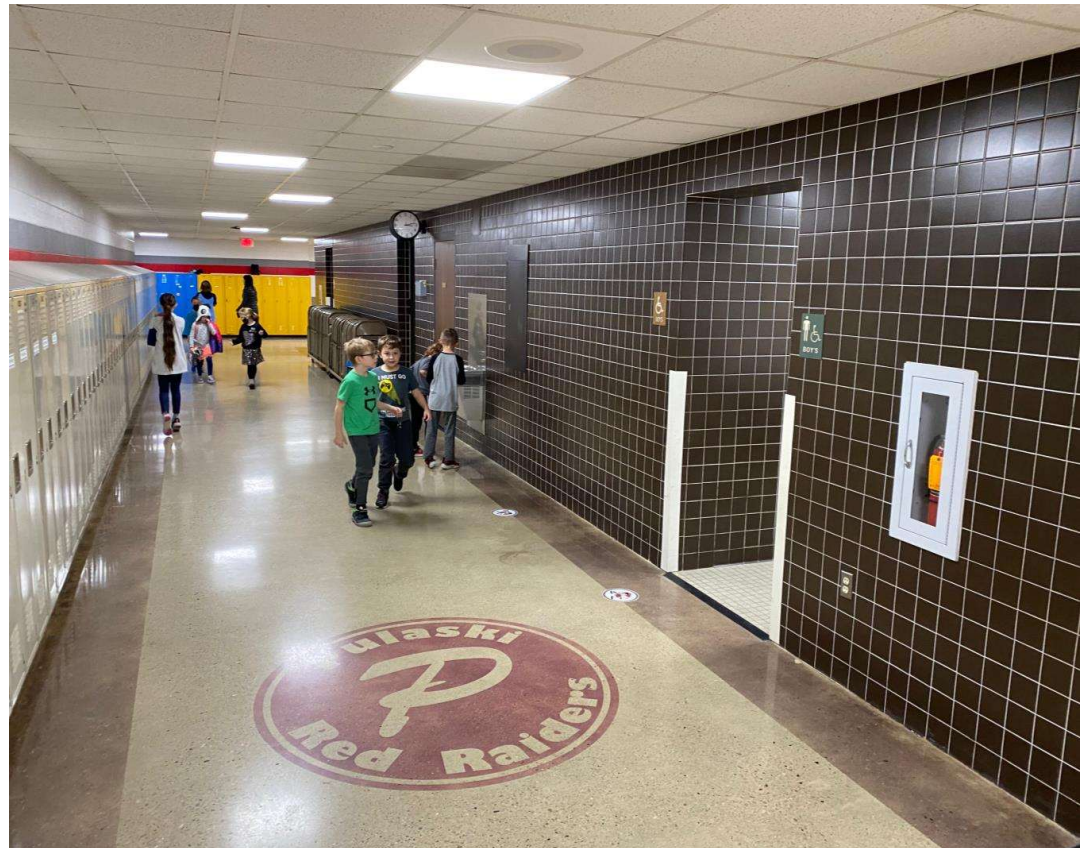
Sunnyside Elementary

The current lunchroom is used as a staging area for students getting onto buses after school.



Sunnyside Elementary

Sunnyside Elementary currently has one set of bathrooms on each floor, which can cause problems when demand is high.



Sunnyside Elementary

Classrooms on the lower floor have no access to natural light. When weather outside isn't conducive to recess, students can go the entire day without natural light.



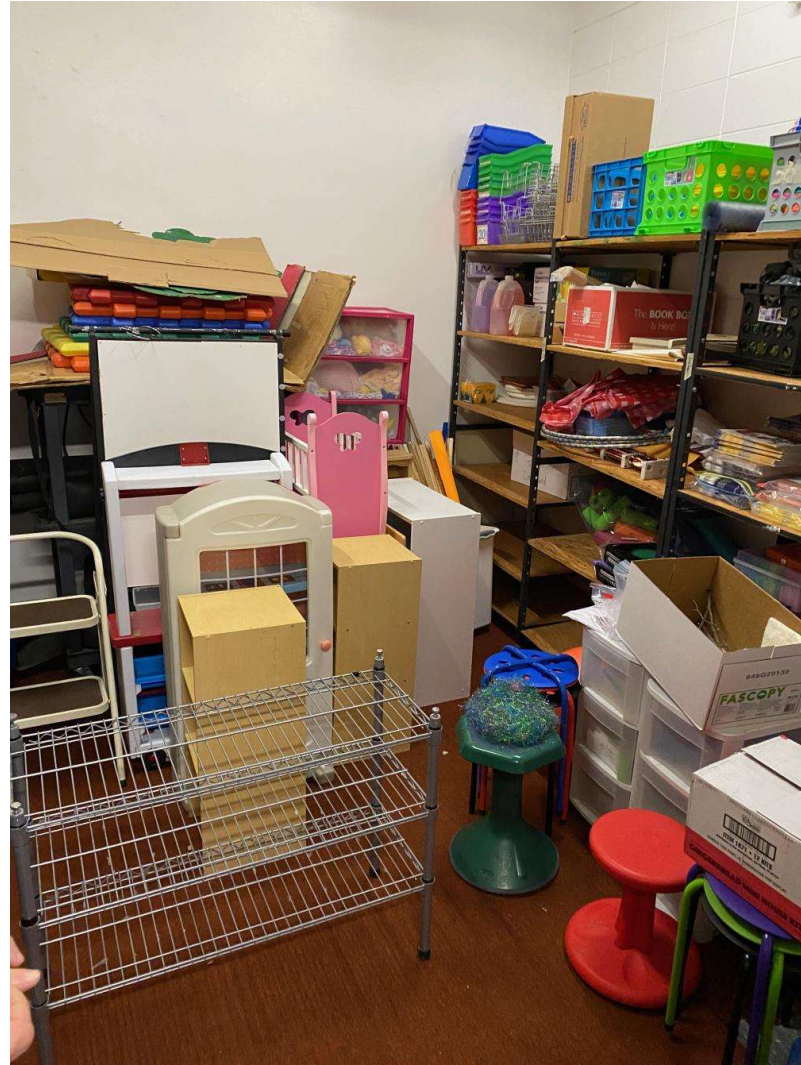
Sunnyside Elementary

Classrooms on the lower floor have no access to natural light. When weather outside isn't conducive to recess, students can go the entire day without natural light.



Sunnyside Elementary

A crowded closet used for storage.



Sunnyside Elementary

The room with electrical panels is used to store chairs.



Sunnyside Elementary

Students play on the Sunnyside playground. If a proposal to renovate Sunnyside is presented to voters and is approved, the playground will be moved to another part of the Sunnyside property. A proposed courtyard to create natural light for classrooms could be used for an enclosed play area for younger students.



Sunnyside Elementary

Students prepare to enter a bus after school. Should a proposal be enacted, a new plan for buses and parents picking up students will help make for smoother pickup.



Sunnyside Elementary

Cars wind into the parking lot from Hilbert Road.



Sunnyside Elementary

Cars line up down Hilbert Road waiting to swing into the Sunnyside parking lot to pick up students.



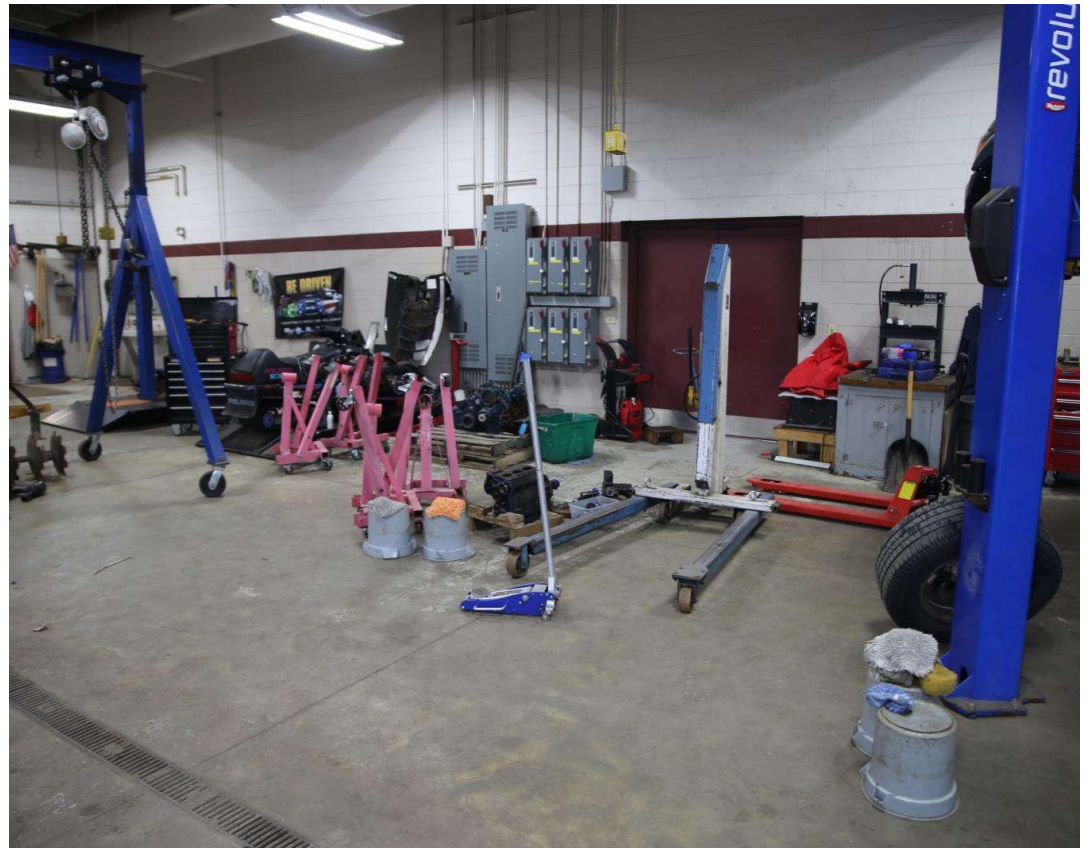
PHS Technology Education

PHS Technology Education is growing. It offers students practical education that will get them into a workforce desperate for trained employees. Students learn woodworking, basic electronics, welding, metal fabrication, small-engine repair and auto mechanics, among other topics. Pictured is the residential wiring room, which could use more storage space for supplies and tools.



PHS Technology Education

With more space, tools and equipment could be better organized.



PHS Technology Education

The auto mechanics area is also used for small-engine repair and more.



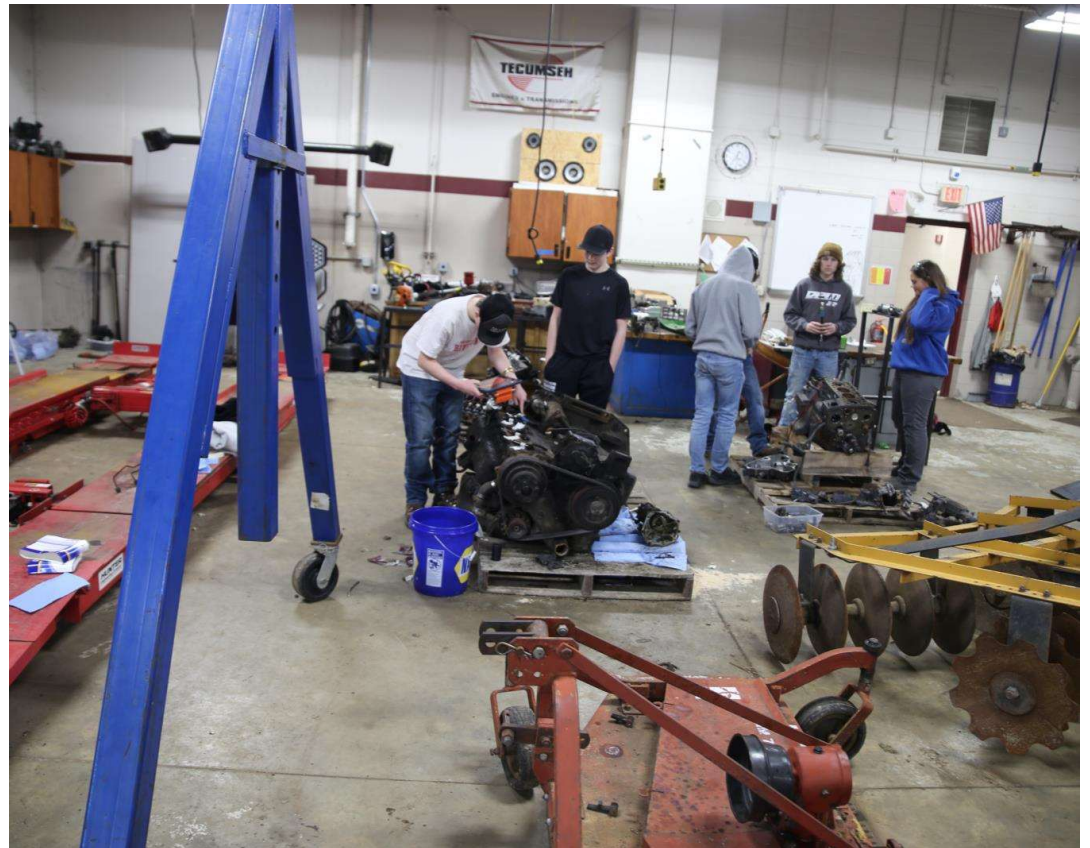
PHS Technology Education

Tires are piled by the tire changing stations.
More room is needed to organize the area.



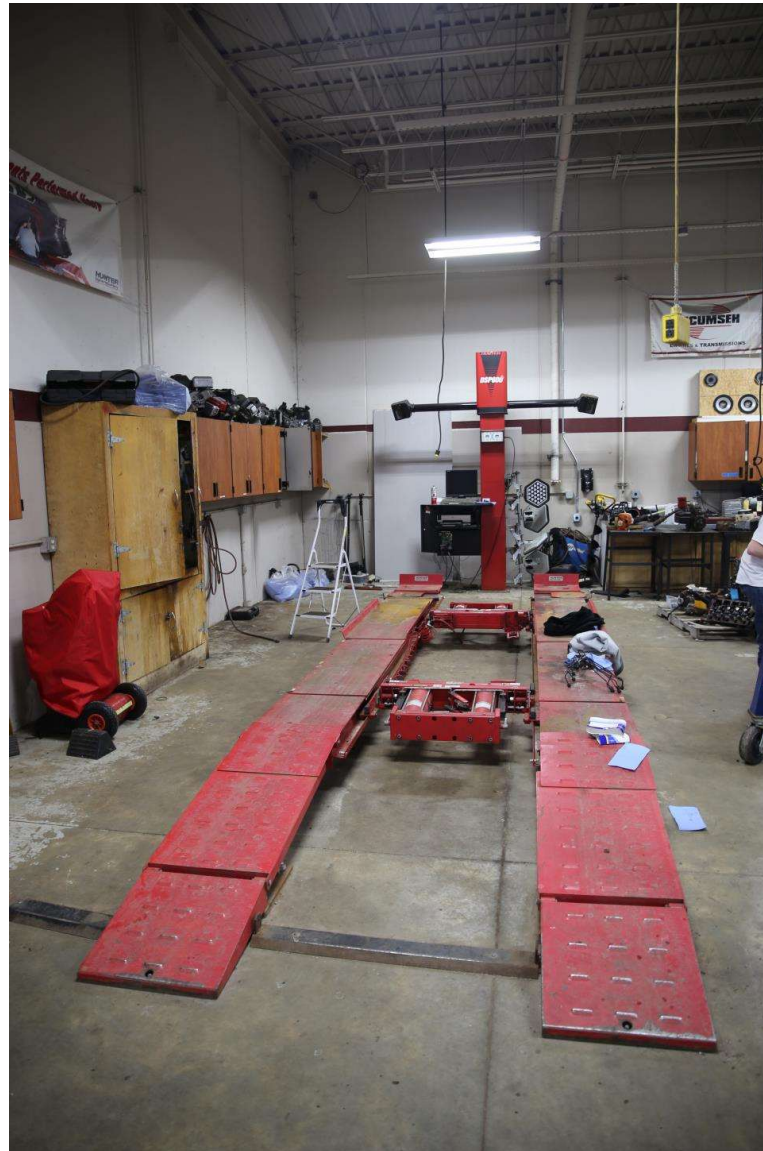
PHS Technology Education

Students work on small-engine projects in a cramped quarters.



PHS Technology Education

An auto repair area is located close by a small-engine repair area, which gets cramped when all areas are in use at the same time.



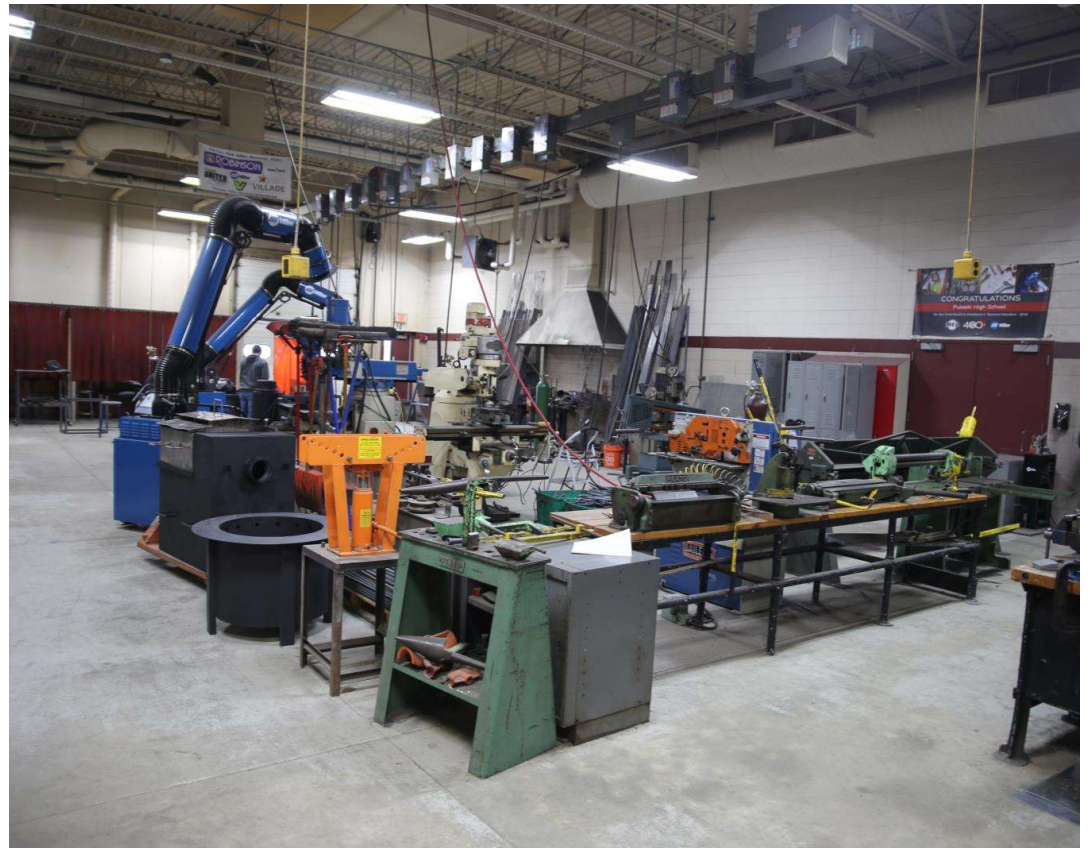
PHS Technology Education

The current equipment layout within the fabrication area and project storage.



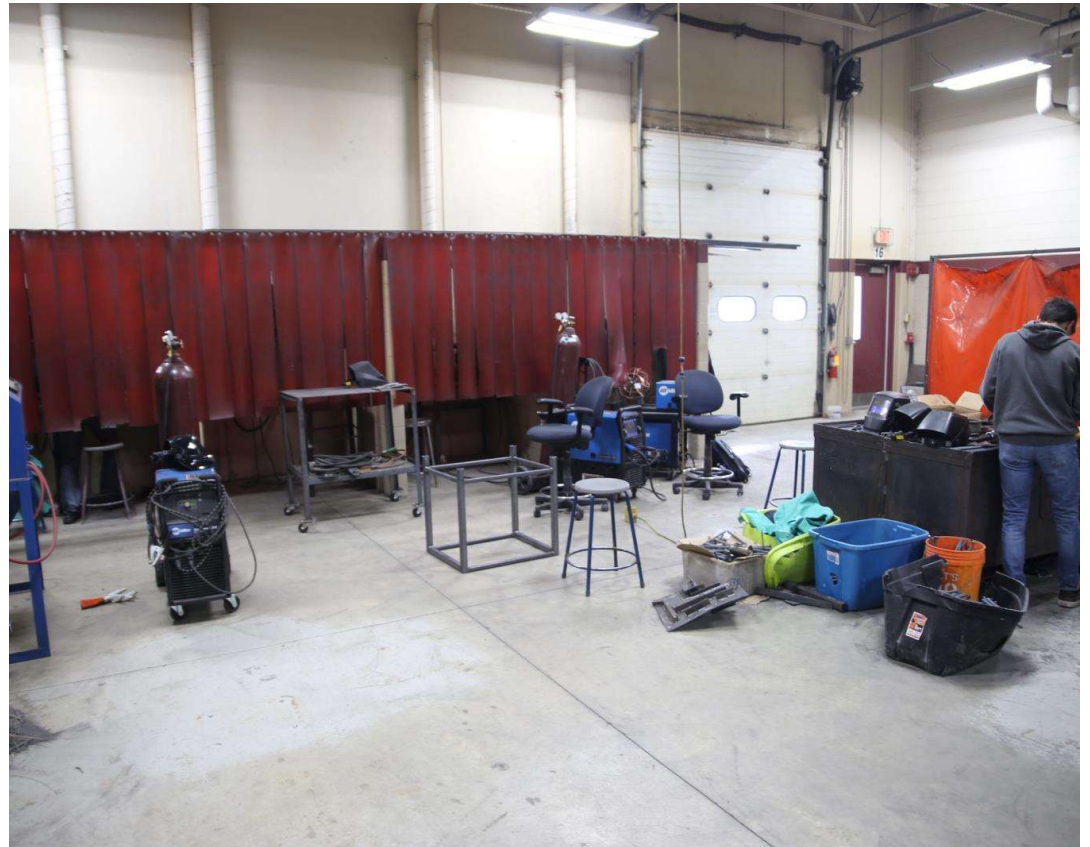
PHS Technology Education

The current equipment layout within the fabrication area and project storage.



PHS Technology Education

Welding stations are popular tools for students. More could be added with additional space.



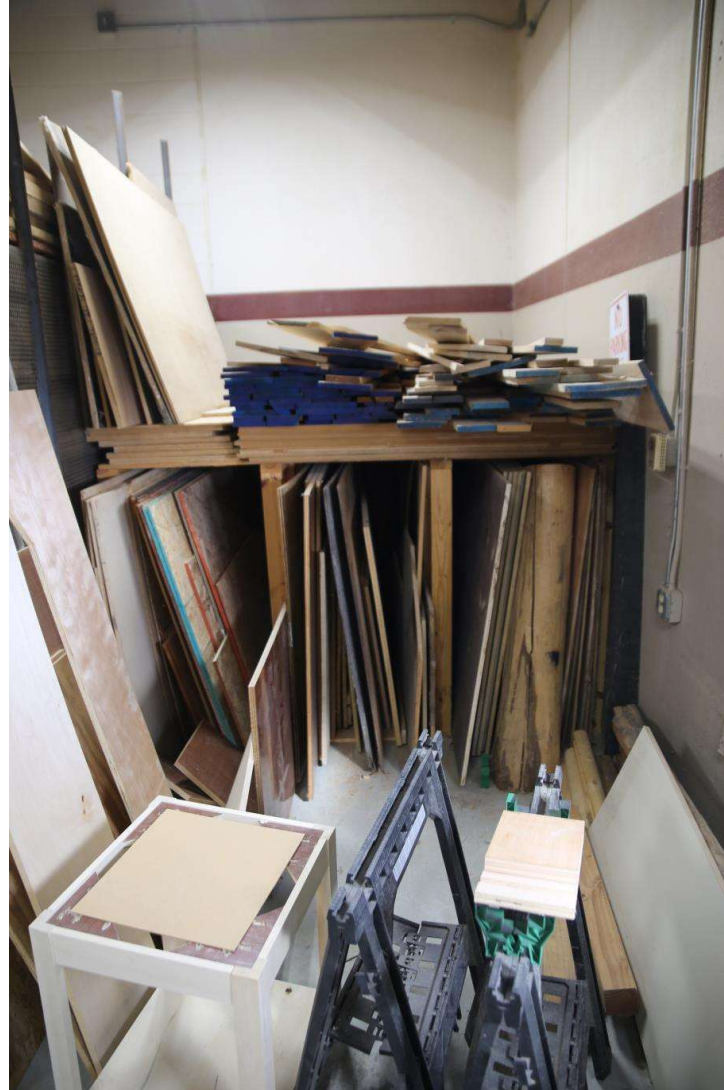
PHS Technology Education

Grinder equipment in the Metal Shop.



PHS Technology Education

The current vertical storage would be replaced with horizontal storage, but additional space is needed to make this happen.



PHS Technology Education

The current workflow for machines is OK as it stands. However, additional space is needed for material storage.



PHS Technology Education

Horizontal storage of wood could be expanded with more space.



PHS Technology Education

Donated wood is stacked on tables instead of a separate storage area.



PHS Technology Education

More storage space is needed for student projects.



PHS Technology Education

More space is needed for solid material storage in the wood shop.

