

Pulaski Community School District

Capacity Study



TABLE OF CONTENTS

TAB 1
Acknowledgments 1

TAB 2
Introduction 2

TAB 3
Educational Capacity Analysis
Methodology 4

TAB 4
Summary
Enrollment History 19
Current Enrollment Summary 20

TAB 5
Classroom Capacity Count Diagrams 21



ACKNOWLEDGMENTS

This analysis and resulting report was created with the leadership and support of the following:

ADMINISTRATION TEAM

- Mr. Mark Logan, Director of Business Services
- Mrs. Allison Space, Superintendent
- Mr. Nick Phillips, Director of Facilities
- Mrs. Jennifer Gracyalny, Executive Director of Teaching and Learning



Pulaski Community School District

INTRODUCTION

Bray Architects was asked to provide an analysis of the educational capacity for seven existing schools in the Pulaski Community School District to support the ongoing master planning efforts of the District.

School	Grades Served	Year Built & Major Additions/ Renovations
Fairview Elementary	4K - 5th Grades	1961, 1967
Glenbrook Elementary	4K - 5th Grades	1950, 1955, 1958, 1992, 2015
Hillcrest Elementary	4K - 5th Grades	1972, 1997
Lannoye Elementary	Early Childhood - 5th Grades	1962, 1967, 1998
Sunnyside Elementary	4K - 5th Grades	1980
Pulaski Community Middle School	5th - 8th Grades	1965, 1967, 1973, UNKNOWN
Pulaski High School	9th - 12th Grades	1998

INTRODUCTION

OBJECTIVES / GOALS

This analysis aims to provide an optimal building capacity for each school that will allow facility decisions to be made with a clear understanding of how each existing school can accommodate potential student enrollment growth. If the enrollment continues increasing on the south and east sides of the District, and remaining the same or slightly decreasing on the north and west sides, then the District should consider the reevaluation of facilities solutions at given schools or grade levels.

As you will see later in the report determining the capacity of a school is a complex effort that relies upon a number of factors including:

- Generally accepted practices;
- Independent school planning resources;
- Bray's experience as a 55+ year leader in K-12 planning and design; and
- Input from the District's educational leadership team regarding how the schools are currently utilized and how they are envisioned to be utilized in the future.

ADDITIONAL CONSIDERATIONS

This analysis aims to establish the optimal building capacity for each school based on classroom and other traditional learning environments. It does not evaluate the following factors that can impact capacity today or in the years to come.

- Early childhood instruction – the number of early childhood students entering the district and / or the current approach of providing early childhood instruction at each elementary schools
- Special education – the number of students receiving special education services or the approach to main streaming as many of those students as possible into the traditional classroom setting
- Curricular shifts – the change in curriculum and / or how the current curriculum is delivered
- Non-classroom academic spaces – the size, quantity and configuration of essential but non-traditional classroom learning and support environments such as the cafeteria / kitchen, gymnasium / locker rooms, student services (guidance, social work, etc.), and rehearsal spaces to support band, choir and / or orchestra.

ENROLLMENT CAPACITY

This analysis is aimed at identifying the Enrollment Capacity of each school. Enrollment Capacity, as defined by the National Center for Education Statistics publication Facilities Information Management, is "the maximum number of students that a school building can satisfactorily accommodate at one time for the particular educational program and curriculum offered."

METHODOLOGY

We will utilize a methodology based on class size and utilization rate to evaluate the educational capacity of each school.

This approach is impacted by many factors that are controlled by curricular delivery goals, optimal class sizes and building operations. Because of these factors, the capacities identified in the report are not valid forever and should be reevaluated when changes are made to each school's operations that would affect these capacity calculations.

METHODOLOGY

CLASS SIZE AND UTILIZATION RATE

This approach evaluates the number of classrooms and learning spaces at each school and then applies a class size target to each classroom and learning space. For example if an elementary school has 20 classrooms and the class size target is 24 students per classroom the capacity is $20 \times 24 = 480$. At the middle and high school levels, a utilization rate is applied to each classroom to determine capacity.

This methodology is generally accepted as a reliable way to determine school capacities but does rely on two key assumptions/variables – the class size targeted and, at the middle and high schools, the utilization rate. If either of these are changed, even by only a few students or by proposing utilization one less class period per day, the capacity can be changed significantly.

Class Size Targets

In partnership with Bray Architects, the district has established the following class size targets for calculating the enrollment capacity:

Grade/Subject	Targeted Class Size	Notes
Elementary School		
Early Childhood	8-10	
4K	15-18	
Kindergarten	20-22 ▲ ●	
1st Grade	20-22 ▲ ●	
2nd Grade	22-24 ▲ ●	
3rd Grade	22-24 ▲ ●	
4th Grade	25-27 ■	
5th Grade	25-27 ■	

- ▲ Glenbrook grades 4K-3 are part of the AGR program, capacity for students in grades K-3 is 18.
- Fairview utilizes AGR standards for classroom sizes in grades K-3.
- For Sunnyside, 4th and 5th grades are calculated at 25 students due to small classroom sizes.

Pulaski Community School District

METHODOLOGY

Grade/Subject	Targeted Class Size	Notes
Middle School		
Classrooms	27-28	Social Studies, English, Math, Foreign Languages, Health
F.A.C.E.	27-28	Foods Lab
Business Ed.	27-28	
Music	27-28	Band, Choir
Tech. Ed.	27-28	Woods, Automotive
Art	27-28	
Science	27-28	
Agriculture	27-28	
Gymnasium	27-28	Class size is per gym station
High School		
Classrooms	27-28	Social Studies, English, Math, World Language, Health, Nursing
F.A.C.S.	27-28	
Business Ed.	27-28	
Music	27-28	Band, Choir
Tech. Ed.	27-28	Woods, Metals, Automotive
Art	27-28	
Science	27-28	
Agriculture	27-28	
Gymnasium	27-28	Class size is per gym station

¹: Class size targets are established for the purpose of calculating building capacity. **They should not be construed as a District objective for class size or a benchmark to which the District should be evaluated moving forward.**

METHODOLOGY

Application of a Utilization Rate

After the quantity of classrooms and number of students per classroom is calculated a utilization rate will be applied to the middle and high school calculations.

A utilization rate will not be applied to the elementary schools as the classrooms are not able to be utilized by other students when students are in art, special education, music, physical education, or other similar program.

The following utilization percentages are per Calculating School Capacity: Local, State & National Perspectives. CEFPI Per-Conference Workshop.

School Type	Average Utilization Rate	Utilization Rate for Capacity Analysis	Notes
Elementary	95%-100%	100%	95% comes from not every seat in every room being utilized
Middle (6th-8th Grade)	70%-85%	Core = 57% Elective = 67%	Core Classrooms = 4 out of 7 periods, Electives = 6 out of 9 periods
High (9th-12th Grade)	80%-85%	Core = 57% Elective = 67%	Core Classrooms = 4 out of 7 periods, Electives = 6 out of 9 periods

Pulaski Community School District

METHODOLOGY

Summary

Based on this methodology, class size and utilization rate, the capacity for each school is summarized below. The detail on how these capacities were calculated is included on the following pages.

Elementary Schools	Capacity Range - Low (20-25)	2021-2022 Enrollment	Over (Under) Capacity
Fairview Elementary	180	135	(45)
Glenbrook Elementary	572	528	(44)
Hillcrest Elementary	303	387	84
Lannoye Elementary	292	290	(2)
Sunnyside Elementary	452	476	24
Totals:	1,799	1,816	17

Elementary Schools	Capacity Range - High (22-27)	2021-2022 Enrollment	Over (Under) Capacity
Fairview Elementary	189	135	(54)
Glenbrook Elementary	594	528	(66)
Hillcrest Elementary	332	387	55
Lannoye Elementary	322	290	(32)
Sunnyside Elementary	484	476	(8)
Totals:	1,921	1,816	(105)

Secondary Schools	Target Capacity - Low (27)	2021-2022 Enrollment	Over (Under) Capacity
Pulaski Community Middle School	843	826	(17)
Pulaski High School	1,248	1,123	(125)
Totals:	2,091	1,949	(142)

Pulaski Community School District

METHODOLOGY

Secondary Schools	Capacity Target - High (28)	2021-2022 Enrollment	Over (Under) Capacity
Pulaski Community Middle School	896	826	(70)
Pulaski High School	1,326	1,123	(203)
Totals:	2,222	1,949	(273)

THIS PAGE IS INTENTIONALLY LEFT BLANK.

Pulaski Community School District

FAIRVIEW ELEMENTARY

Room Number	Grade level / Subject	Class Size Guideline Range		Notes:
2	4-Year-Old Kindergarten	15	18	
1	Kindergarten	18	18	
5	First Grade	18	18	
11	Second Grade	18	18	
13	Third Grade	18	18	
18	Third Grade	18	18	
22	Fourth Grade	25	27	
17	Fifth Grade	25	27	
20	Fifth Grade	25	27	
Total Building Capacity		180	189	

Pulaski Community School District

GLENBROOK ELEMENTARY

Room Number	Grade level / Subject	Class Size Guideline Range		Notes:
D-11	4-Year-Old Kindergarten	15	18	
D-11	4-Year-Old Kindergarten	15	18	
A-15	Kindergarten	18	18	
A-17	Kindergarten	18	18	
A-18	Kindergarten	18	18	
A-19	Kindergarten	18	18	
A-20	Kindergarten	18	18	
B-19	First Grade	18	18	
B-23	First Grade	18	18	
B-25	First Grade	18	18	
B-27	First Grade	18	18	
B-29	First Grade	18	18	
C-15	Second Grade	18	18	
C-16	Second Grade	18	18	
C-17	Second Grade	18	18	
C-18	Second Grade	18	18	
C-22	Second Grade	18	18	
B-216	Third Grade	18	18	
B-221	Third Grade	18	18	
B-227	Third Grade	18	18	
B-229	Third Grade	18	18	
B-233	Third Grade (Spec. Ed.)			* See note below
B-211	Fourth Grade	25	27	
B-213	Fourth Grade	25	27	
B-215	Fourth Grade	25	27	
B-217	Fourth Grade	25	27	
B-212	Fifth Grade	25	27	
B-214	Fifth Grade	25	27	
B-223	Fifth Grade	25	27	
B-225	Fifth Grade	25	27	
Total Building Capacity		572	594	

* Note: Room currently used as a classroom due to overpopulation, not being used as intended based on elementary programmatic needs.

Pulaski Community School District

HILLCREST ELEMENTARY

Room Number	Grade level / Subject	Class Size		Notes:
		Guideline Range		
101	4-Year-Old Kindergarten	15	18	
102	Kindergarten	20	22	
103	Kindergarten	20	22	
108	Kindergarten	20	22	
116	First Grade	20	22	
117	First Grade (Spec. Ed.)			* See note below
133	First Grade	20	22	
118	Second Grade (Spec. Ed.)			* See note below
119	Second Grade	22	24	
121	Second Grade	22	24	
123	Third Grade	22	24	
132	Third Grade	22	24	
136	Third Grade (Music)			* See note below
129	Fourth Grade	25	27	
130	Fourth Grade	25	27	
127	Fifth Grade	25	27	
128	Fifth Grade	25	27	
Total Building Capacity		303	332	

* Note: Room currently used as a classroom due to overpopulation, not being used as intended based on elementary programmatic needs.

Pulaski Community School District

LANNOYE ELEMENTARY

Room Number	Grade level / Subject	Class Size Guideline Range		Notes:
205	Early Childhood	8	10	
209	Early Childhood	8	10	
234	Early Childhood	8	10	
214	Kindergarten	20	22	
215	Kindergarten	20	22	
210	First Grade	20	22	
211	First Grade	20	22	
212	Second Grade	22	24	
213	Second Grade	22	24	
220	Third Grade	22	24	
233	Third Grade	22	24	
221	Fourth Grade	25	27	
231	Fourth Grade	25	27	
224	Fifth Grade	25	27	
232	Fifth Grade	25	27	
Total Building Capacity		292	322	

Pulaski Community School District

SUNNYSIDE ELEMENTARY

Room Number	Grade level / Subject	Class Size Guideline Range		Notes:
115	4-Year-Old Kindergarten	15	18	
124	4-Year-Old Kindergarten	15	18	
122	Kindergarten	20	22	
132	Kindergarten	20	22	
138	Kindergarten	20	22	
139	Kindergarten	20	22	
123	First Grade	20	22	
125	First Grade	20	22	
126	First Grade	20	22	
131	First Grade (Spec. Ed.)			* See note below
133	Second Grade	22	24	
134	Second Grade	22	24	
137	Second Grade	22	24	
41	Third Grade (Spec. Ed.)			* See note below
42	Third Grade	22	24	
43	Third Grade	22	24	
44	Third Grade	22	24	
33	Fourth Grade	25	25	
34	Fourth Grade	25	25	
37	Fourth Grade	25	25	
29	Fifth Grade	25	25	
32	Fifth Grade	25	25	
38	Fifth Grade	25	25	
Total Building Capacity		452	484	

* Note: Room currently used as a classroom due to overpopulation, not being used as intended based on elementary programmatic needs.

Pulaski Community School District

PULASKI COMMUNITY MIDDLE SCHOOL

Room Number	Grade level / Subject	Target Class Size Low	Target Class Size High	Utilization rate ¹	Calculated Capacity Low	Calculated Capacity High	Notes:
1009	Literacy	27	28	57.0%	15	16	
1012	Literacy	27	28	57.0%	15	16	
1068	Literacy	27	28	57.0%	15	16	
1069	Literacy	27	28	57.0%	15	16	
1089	Literacy	27	28	57.0%	15	16	
1110	Literacy	27	28	57.0%	15	16	
2021	Literacy	27	28	57.0%	15	16	
2027	Literacy	27	28	57.0%	15	16	
1067	Social Studies	27	28	57.0%	15	16	
1081	Social Studies	27	28	57.0%	15	16	
1094	Social Studies	27	28	57.0%	15	16	
2002	Social Studies	27	28	57.0%	15	16	
2004	Social Studies	27	28	57.0%	15	16	
2025	Social Studies/Literacy	27	28	57.0%	15	16	
2026	Social Studies	27	28	57.0%	15	16	
2009	Foreign Language	27	28	57.0%	15	16	
2017	Foreign Language	27	28	57.0%	15	16	
2018	Foreign Language	27	28	57.0%	15	16	
1007	Math	27	28	57.0%	15	16	
1010	Math	27	28	57.0%	15	16	
1085	Math	27	28	57.0%	15	16	
1087	Math	27	28	57.0%	15	16	
2020	Math	27	28	57.0%	15	16	
2028	Math	27	28	57.0%	15	16	
2024	Math/Science	27	28	57.0%	15	16	
1015	Science	27	28	57.0%	15	16	
1016	Science	27	28	57.0%	15	16	
1057	Science	27	28	57.0%	15	16	
1058	Science	27	28	57.0%	15	16	
1059	Science	27	28	57.0%	15	16	
1090	Science	27	28	57.0%	15	16	
1091	Science	27	28	57.0%	15	16	
1108	Science	27	28	57.0%	15	16	
2003	Science	27	28	57.0%	15	16	
2006	Science	27	28	57.0%	15	16	
2015	Health	27	28	57.0%	15	16	
2016	Health	27	28	57.0%	15	16	

Pulaski Community School District

PULASKI COMMUNITY MIDDLE SCHOOL

Room Number	Grade level / Subject	Target Class Size Low	Target Class Size High	Utilization rate ¹	Calculated Capacity Low	Calculated Capacity High	Notes:
2010	PLL	27	28	67.0%	18	19	
2001	Business Ed.	27	28	67.0%	18	19	
1076	Tech. Ed.	27	28	67.0%	18	19	Automotive
1078	Tech. Ed.	27	28	67.0%	18	19	Woods
1080	Tech. Ed.	27	28	67.0%	18	19	
1070	Agriculture	27	28	67.0%	18	19	
1071	Agriculture	27	28	67.0%	18	19	
1075	Agriculture	27	28	67.0%	18	19	
1008	Art	27	28	67.0%	18	19	
1011	Art	27	28	67.0%	18	19	
2008	F.A.C.E.	27	28	67.0%	18	19	Foods Lab
1014	Music	27	28	67.0%	18	19	
1029	Music	27	28	67.0%	18	19	Band
1031	Music	27	28	67.0%	18	19	Choir
1044	Gym	27	28	67.0%	18	19	
1097	Gym	27	28	67.0%	18	19	
Total Building Capacity					843	896	

1. Utilization rate based on 2021-2022 schedule provided by the School District. Core Classroom utilization rate represents a space being used 4 out of 7 periods per day (57%). Elective Classroom utilization rate represents a space being used 6 out of 9 periods per day (67%).

Pulaski Community School District

PULASKI HIGH SCHOOL

Room Number	Grade level / Subject	Target Class Size Low	Target Class Size High	Utilization rate ¹	Calculated Capacity Low	Calculated Capacity High	Notes:
1302	Literacy	27	28	57.0%	15	16	
1304	Literacy	27	28	57.0%	15	16	
1305	Literacy	27	28	57.0%	15	16	
1306	Literacy	27	28	57.0%	15	16	
1308	Literacy	27	28	57.0%	15	16	
1309	Literacy	27	28	57.0%	15	16	
1310	Literacy	27	28	57.0%	15	16	
1311	Literacy	27	28	57.0%	15	16	
1312	Literacy	27	28	57.0%	15	16	
1313	Literacy	27	28	57.0%	15	16	
1314	Literacy	27	28	57.0%	15	16	
1315	Literacy	27	28	57.0%	15	16	
1316	Literacy	27	28	57.0%	15	16	
1402	Social Studies	27	28	57.0%	15	16	
1404	Social Studies	27	28	57.0%	15	16	
1406	Social Studies	27	28	57.0%	15	16	
1408	Social Studies	27	28	57.0%	15	16	
1409	Social Studies	27	28	57.0%	15	16	
1410	Social Studies	27	28	57.0%	15	16	
1411	Social Studies	27	28	57.0%	15	16	
1412	Social Studies	27	28	57.0%	15	16	
1414	Social Studies	27	28	57.0%	15	16	
1415	Social Studies	27	28	57.0%	15	16	
2303	World Language	27	28	57.0%	15	16	
2306	World Language	27	28	57.0%	15	16	
2308	World Language	27	28	57.0%	15	16	
2309	World Language	27	28	57.0%	15	16	
2310	World Language	27	28	57.0%	15	16	
2402	Math	27	28	57.0%	15	16	
2404	Math	27	28	57.0%	15	16	
2405	Math	27	28	57.0%	15	16	
2406	Math	27	28	57.0%	15	16	
2408	Math	27	28	57.0%	15	16	
2409	Math	27	28	57.0%	15	16	
2410	Math	27	28	57.0%	15	16	
2411	Math	27	28	57.0%	15	16	
2412	Math	27	28	57.0%	15	16	
2413	Math	27	28	57.0%	15	16	

Pulaski Community School District

PULASKI HIGH SCHOOL

Room Number	Grade level / Subject	Target Class Size Low	Target Class Size High	Utilization rate ¹	Calculated Capacity Low	Calculated Capacity High	Notes:
2414	Math	27	28	57.0%	15	16	
2415	Math	27	28	57.0%	15	16	
2416	Math	27	28	57.0%	15	16	
2700	Science	27	28	57.0%	15	16	
2704	Science	27	28	57.0%	15	16	
2705	Science	27	28	57.0%	15	16	
2707	Science	27	28	57.0%	15	16	
2709	Science	27	28	57.0%	15	16	
2710	Science	27	28	57.0%	15	16	
2713	Science	27	28	57.0%	15	16	
2715	Science	27	28	57.0%	15	16	
2716	Science	27	28	57.0%	15	16	
2717	Science	27	28	57.0%	15	16	
2718	Science	27	28	57.0%	15	16	
2104	Nursing	27	28	67.0%	18	19	
2302	Nursing	27	28	67.0%	18	19	
2311	Business Ed.	27	28	67.0%	18	19	
2312	Business Ed.	27	28	67.0%	18	19	
2313	Business Ed.	27	28	67.0%	18	19	
2314	Business Ed.	27	28	67.0%	18	19	
1506/1507	Tech. Ed.	27	28	67.0%	18	19	*See note below
1700	Tech. Ed.	27	28	67.0%	18	19	Woods
1701	Tech. Ed.	27	28	67.0%	18	19	Woods
1702	Tech. Ed.	27	28	67.0%	18	19	Automotive
1706	Tech. Ed.	27	28	67.0%	18	19	Automotive
1707	Tech. Ed.	27	28	67.0%	18	19	Metals
1708	Tech. Ed.	27	28	67.0%	18	19	Metals
1710	Tech. Ed.	27	28	67.0%	18	19	
1509	Agriculture	27	28	67.0%	18	19	
1511/1512	Agriculture	27	28	67.0%	18	19	*See note below
1513/1516	Agriculture	27	28	67.0%	18	19	*See note below
2000	Art	27	28	67.0%	18	19	
2004	Art	27	28	67.0%	18	19	
2005	Art	27	28	67.0%	18	19	
2100	F.A.C.S	27	28	67.0%	18	19	
2101	F.A.C.S	27	28	67.0%	18	19	

Pulaski Community School District

PULASKI HIGH SCHOOL

Room Number	Grade level / Subject	Target Class Size Low	Target Class Size High	Utilization rate ¹	Calculated Capacity Low	Calculated Capacity High	Notes:
1909	Music	27	28	67.0%	18	19	Choir
1920	Music	27	28	67.0%	18	19	Band
1931	Music	27	28	67.0%	18	19	
1825	Gym	27	28	67.0%	18	19	
Total Building Capacity					1,248	1,326	

1. Utilization rate based on 2021-2022 schedule provided by the School District. Core Classroom utilization rate represents a space being used 4 out of 7 periods per day (57%). Elective Classroom utilization rate represents a space being used 6 out of 9 periods per day (67%).

* Note: Classroom supporting lab space is only calculated for the lab space.

Pulaski Community School District

ENROLLMENT HISTORY

Grade	2011-2012	2012-2013	2013-2014	2014-2015	2015-2016	2016-2017	2017-2018	2018-2019	2019-2020	2020-2021	2021-2022	Notes
Early Childhood	27	9	22	25	30	27	16	17	15	11	16	
4K	218	181	191	213	198	219	211	224	229	188	251	
K	213	266	224	247	247	221	252	269	253	256	257	
1st	264	223	268	232	246	256	234	258	269	244	272	
2nd	266	274	231	289	249	246	262	246	261	265	245	
3rd	252	273	266	236	288	244	249	268	248	261	267	
4th	289	249	273	271	234	293	262	254	267	242	275	
5th	269	290	247	277	273	234	298	262	259	263	237	
6th	267	282	300	270	285	282	254	319	284	270	290	
7th	258	263	279	298	261	285	292	354	317	278	262	
8th	259	267	259	281	298	268	285	293	258	310	278	
9th	306	259	272	263	282	291	269	294	294	247	319	
10th	271	306	256	273	264	278	282	267	296	297	244	
11th	293	269	306	250	261	254	270	277	262	284	294	
12th	302	296	280	306	257	255	257	269	285	271	298	
Total District Enrollment	3,754	3,707	3,674	3,731	3,673	3,653	3,693	3,871	3,797	3,687	3,805	
Change Over Prior Period	-	-47	-33	57	-58	-20	40	178	-74	-110	118	
EC-5th Grades	1,798	1,765	1,722	1,790	1,765	1,740	1,784	1,798	1,801	1,730	1,820	
6th - 8th Grades	784	812	838	849	844	835	831	966	859	858	830	
9th - 12th Grades	1,172	1,130	1,114	1,092	1,064	1,078	1,078	1,107	1,137	1,099	1,155	

Pulaski Community School District

CURRENT ENROLLMENT SUMMARY

Grade	Early Childhood	4K	K	1st	2nd	3rd	4th	5th	6th	7th	8th	9th	10th	11th	12th	Total School Enrollment
Fairview Elementary	-	22	11	14	17	27	17	27	-	-	-	-	-	-	-	135
Glenbrook Elementary	-	62	81	76	77	68	92	72	-	-	-	-	-	-	-	528
Hillcrest Elementary	-	69	57	61	49	57	47	47	-	-	-	-	-	-	-	387
Lannoye Elementary	16	36	37	40	39	41	45	36	-	-	-	-	-	-	-	290
Sunnyside Elementary	-	62	71	80	63	73	74	53	-	-	-	-	-	-	-	476
Pulaski Community Middle School	-	-	-	-	-	-	-	-	288	261	277	-	-	-	-	826
Pulaski High School	-	-	-	-	-	-	-	-	-	-	-	314	241	282	286	1,123
Total Grade Level Enrollment	16	251	257	271	245	266	275	235	288	261	277	314	241	282	286	3,765

* Note: Total School and Grade Level Enrollment does not reflect BTL/e-Kiel Enrollment.

Grade	Total School Enrollment
EC - 5th Grades	1,816
6th - 8th Grades	826
9th - 12th Grades	1,123

Color Key

- = 4-Year-Old Kindergarten
- = Kindergarten
- = First Grade
- = Second Grade
- = Third Grade
- = Fourth Grade
- = Fifth Grade



First Floor Plan - Classroom Capacity Count

SCALE: 1" = 30'-0"

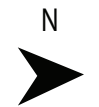
Fairview Elementary
Pulaski Community School District

Color Key

- = 4-Year-Old Kindergarten
- = Kindergarten
- = First Grade
- = Second Grade
- = Third Grade
- = Fourth Grade
- = Fifth Grade



First Floor Plan - Classroom Capacity Count
SCALE: 1" = 50'-0"


 Glenbrook Elementary
 Pulaski Community School District

Color Key

- = 4-Year-Old Kindergarten
- = Kindergarten
- = First Grade
- = Second Grade
- = Third Grade
- = Fourth Grade
- = Fifth Grade



Second Floor Plan - Classroom Capacity Count

SCALE: 1" = 50'-0"

Glenbrook Elementary
Pulaski Community School District



Color Key

- = 4-Year-Old Kindergarten
- = Kindergarten
- = First Grade
- = Second Grade
- = Third Grade
- = Fourth Grade
- = Fifth Grade



First Floor Plan - Classroom Capacity Count
 SCALE: 1/32" = 1'-0"


 Hillcrest Elementary
 Pulaski Community School District

Color Key

- = 4-Year-Old Kindergarten
- = Kindergarten
- = First Grade
- = Second Grade
- = Third Grade
- = Fourth Grade
- = Fifth Grade



Lower Level Plan - Classroom Capacity Count

SCALE: 3/64" = 1'-0"

Sunnyside Elementary
Pulaski Community School District

Color Key

- = 4-Year-Old Kindergarten
- = Kindergarten
- = First Grade
- = Second Grade
- = Third Grade
- = Fourth Grade
- = Fifth Grade



First Floor Plan - Classroom Capacity Count

SCALE: 3/64" = 1'-0"

Sunnyside Elementary
Pulaski Community School District

Color Key

- = Foreign Language
- = Literacy
- = Social Studies
- = Math
- = Science
- = Other



First Floor Plan - Classroom Capacity Count

SCALE: 1" = 60'-0"

Pulaski Community Middle School
Pulaski Community School District

Color Key

- = Foreign Language
- = Literacy
- = Social Studies
- = Math
- = Science
- = Other



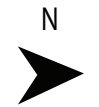
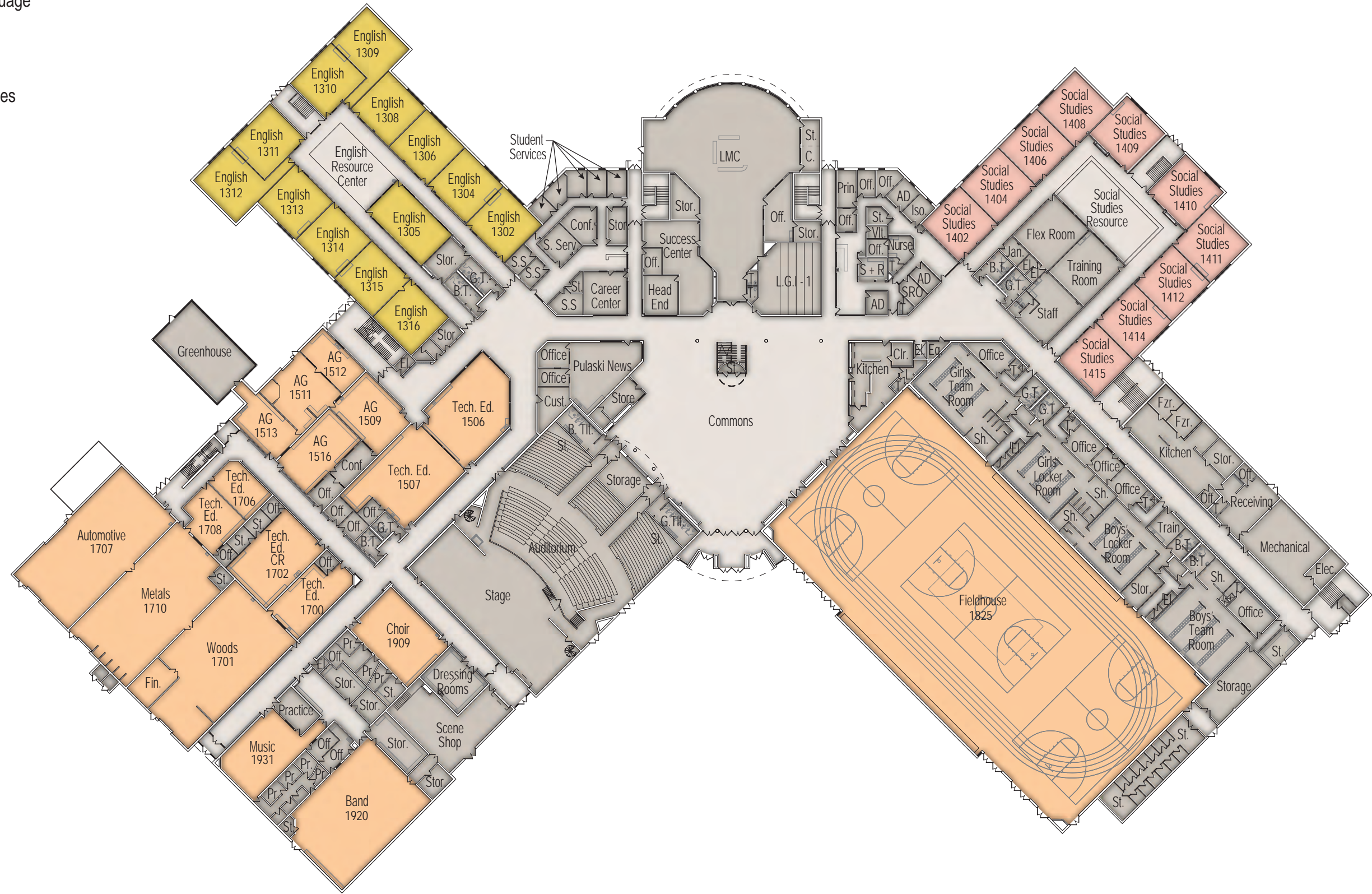
Second Floor Plan - Classroom Capacity Count

SCALE: 1" = 60'-0"

Pulaski Community Middle School
Pulaski Community School District

Color Key

- = World Language
- = Literacy
- = Social Studies
- = Math
- = Science
- = Other



First Floor Plan - Classroom Capacity Count
 SCALE: 1" = 60'-0"

Pulaski High School
 Pulaski Community School District

Color Key

- = World Language
- = Literacy
- = Social Studies
- = Math
- = Science
- = Other



Second Floor Plan - Classroom Capacity Count

SCALE: 1" = 60'-0"

Pulaski High School
Pulaski Community School District



